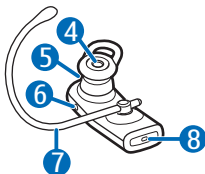
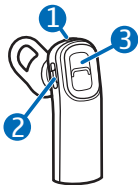


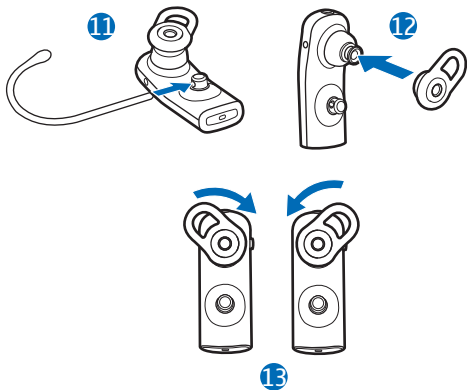
# Nokia Bluetooth Headset BH-216

---



9215317/2.0

Copyright © 2009 Nokia. All rights reserved.



## DECLARATION OF CONFORMITY

Hereby, NOKIA CORPORATION declares that this BH-216 product is in compliance with the essential requirements and other relevant provisions of Directive 1999/5/EC. A copy of the Declaration of Conformity can be found at [http://www.nokia.com/phones/declaration\\_of\\_conformity/](http://www.nokia.com/phones/declaration_of_conformity/).



© 2009 Nokia. All rights reserved.

Nokia, Nokia Connecting People and the Nokia Original Accessories logo are trademarks or registered trademarks of Nokia Corporation. Nokia tune is a sound mark of Nokia Corporation. Other product and company names mentioned herein may be trademarks or tradenames of their respective owners.

Reproduction, transfer, distribution, or storage of part or all of the contents in this document in any form without the prior written permission of Nokia is prohibited.

Bluetooth is a registered trademark of Bluetooth SIG, Inc.

Nokia operates a policy of ongoing development. Nokia reserves the right to make changes and improvements to any of the products described in this document without prior notice.

To the maximum extent permitted by applicable law, under no circumstances shall Nokia or any of its licensors be responsible for any loss of data or income or any special, incidental, consequential or indirect damages howsoever caused.

The contents of this document are provided "as is". Except as required by applicable law, no warranties of any kind, either express or implied, including, but not limited to, the implied warranties of merchantability and fitness for a particular purpose, are made in relation to the accuracy, reliability or contents of this document. Nokia reserves the right to revise this document or withdraw it at any time without prior notice.

The availability of particular products may vary by region. Please check with your Nokia dealer for details.

Export controls

This device may contain commodities, technology or software subject to export

laws and regulations from the US and other countries. Diversion contrary to law is prohibited.

## Introduction

---

With the Nokia Bluetooth Headset BH-216, you can make and answer calls hands-free with your compatible mobile device.

Read this user guide carefully before using the headset. Also, read the user guide for the device that you connect to the headset.

This product may contain small parts. Keep them out of the reach of small children. The surface of this device is nickel-free.

### **Bluetooth wireless technology**

Bluetooth wireless technology allows you to connect compatible devices without cables. The headset and the other device do not need to

be in line of sight, but they should be within 10 metres (33 feet) of each other. Connections may be subject to interference from obstructions, such as walls, or other electronic devices.

The headset is compliant with the Bluetooth Specification 2.1 + EDR supporting the following profiles: Headset Profile 1.1 and Hands-Free Profile (HFP) 1.5. Check with the manufacturers of other devices to determine their compatibility with this device.

# Get started

---

The headset contains the following parts shown on the title page: power key (1), volume key (2), answer/end key (3), earpiece (4), indicator light (5), charger connector (6), earloop (7), and microphone (8).

Before using the headset, you must charge the battery and pair the headset with a compatible device.

Parts of the device are magnetic. Metallic materials may be attracted to the device. Do not place credit cards or other magnetic storage media near the device, because information stored on them may be erased.

## Charge the battery

Before charging the battery, carefully read "[Battery and charger information](#)".



**Warning:** Use only chargers approved by Nokia for use with this particular model. The use of any other types may invalidate any approval or warranty, and may be dangerous.

When you disconnect the power cord of any accessory, grasp and pull the plug, not the cord.

1. Connect the charger to a wall outlet.
2. Connect the charger cable to the charger connector. The red indicator light is displayed during charging. Charging the battery fully may take up to 1 hour and 15 minutes.
3. When the battery is fully charged, the green indicator light is displayed. Disconnect the

charger from the headset, then from the wall outlet.

The fully charged battery has power for up to 6 hours of talk time or up to 160 hours of standby time.

To check the battery charge when the headset is not connected to a charger, press the power key when the headset is switched on. If the indicator light is green, the charge level is sufficient. If the light is orange, you may need to recharge the battery soon. If the light is red, recharge the battery.

When the battery charge is low, the headset beeps every 5 minutes and the red indicator light flashes.

## **Switch on or off**

To switch on, press and hold the power key for about 5 seconds. The headset beeps, and the green indicator light is displayed. The

headset tries to connect to the last connected device.

To switch off, press and hold the power key for about 2 seconds. The headset beeps, and the red indicator light is briefly displayed. If the headset is not connected to a device within about 30 minutes, it switches off automatically.

## **Pair and connect the headset**

1. Ensure that your mobile device is switched on and the headset is off.
2. Press and hold the power key (for about 8 seconds) until the green indicator light starts to flash quickly.
3. Within about 3 minutes, activate Bluetooth connectivity on the mobile device, and set it to search for Bluetooth devices.

4. Select the headset from the list of found devices.
5. If necessary, enter the passcode 0000 to pair and connect the headset to your device. In some devices, you may need to make the connection separately after pairing.

When the headset is connected to your device and is ready for use, the green indicator light flashes slowly.

You can pair the headset with up to eight devices, but you can connect it to only one device at a time.

To manually connect the headset to the last used device, switch the headset off and on, or press and hold the answer/end key for about 2 seconds.

You may be able to set your device so that the headset connects to it automatically. To activate this feature in a Nokia device, change the paired device settings in the Bluetooth menu.

## Basic use

---

### Change the earpad

The headset may be provided with different sized earpads. Select the earpad that fits the best and is the most comfortable for your ear.

To change the earpad, pull the current earpad from the earpiece, and push the new earpad into place, with the narrower end first (12).

## Place the headset on the ear

Gently push the earpiece against your ear.

You can rotate the earpad to keep the headset securely in the ear (13). For example, if you use the headset on the right ear, you may need to rotate the earpad to the right for the best fit. If you wear an earring, ensure that it is not accidentally attached to the earpad.

To use the headset with the earloop, attach the earloop to it (11). To detach the earloop, gently pull it from the headset. Slide the earloop behind your ear (9), and point the headset towards your mouth (10). Push or pull the earloop to set its length.

## Calls

To make a call, use your mobile device in the normal way when the headset is connected to it.

To redial the number you last called (if your device supports this feature with the headset), when no call is in progress, press the answer/end key twice.

To activate voice dialling (if your device supports this feature with the headset), when no call is in progress, press and hold the answer/end key for about 2 seconds. Proceed as described in the user guide of your device.

To answer or end a call, press the answer/end key. To reject a call, press this key twice.

To adjust the volume, press the volume key up or down.

To mute or unmute the microphone, press the middle of the volume key. When the microphone is muted, the green indicator light flashes twice about every 5 seconds.

To switch a call from the headset to a compatible device, press and hold the answer/end key for about 2 seconds, or switch off the headset. To switch the call back to the headset, press and hold the answer/end key for about 2 seconds, or switch on the headset.

## **Turn lights on or off**

By default, the indicator lights are on in all situations. To turn the lights off in some situations (for example, during a call or when the headset is connected to a mobile device) or back on, press and hold the power key and the answer/end key for about 2 seconds when the headset is connected to a device.

Turning the lights off increases the standby time.

## **Clear settings or reset**

To delete the pairings from the headset when it is switched off, press and hold the power key and the answer/end key (for about 6 seconds) until the red and green indicator lights start to alternate.

To reset the headset if it stops functioning, even though it is charged, connect the headset to a charger while you press and hold the power key. The reset does not clear the pairing settings.

## **Troubleshooting**

If you cannot connect the headset to your compatible device, check that the headset is charged, switched on, and paired with your device.

## Battery and charger information

---

This device has an internal, nonremovable, rechargeable battery. Do not attempt to remove the battery from the device as you may damage the device. This device is intended for use when supplied with power from the following chargers: AC-3, AC-4, AC-5, AC-8, and DC-4. The exact charger model number may vary depending on the type of plug. The plug variant is identified by one of the following: E, EB, X, AR, U, A, C, or UB. The battery can be charged and discharged hundreds of times, but it will eventually wear out. Recharge your battery only with Nokia approved chargers designated for this device. Use of an unapproved charger may present a risk of fire, explosion, leakage, or other hazard.

If a battery is being used for the first time or if the battery has not been used for a prolonged period, it may be

necessary to connect the charger, then disconnect and reconnect it to begin charging the battery. If the battery is completely discharged, it may take several minutes before the charging indicator light is displayed.

Unplug the charger from the electrical plug and the device when not in use. Do not leave a fully charged battery connected to a charger, since overcharging may shorten its lifetime. If left unused, a fully charged battery will lose its charge over time.

Always try to keep the battery between 15°C and 25°C (59°F and 77°F). Extreme temperatures reduce the capacity and lifetime of the battery. A device with a hot or cold battery may not work temporarily. Battery performance is particularly limited in temperatures well below freezing.

Do not dispose of batteries in a fire as they may explode. Batteries may also explode if damaged.

Never use any charger that is damaged.



**Important:** Battery talk and standby times are estimates only and depend on network conditions, features used, battery age and condition, temperatures to which battery is exposed, and many other factors. The amount of time a device is used for calls will affect its standby time. Likewise, the amount of time that the device is turned on and in the standby mode will affect its talk time.

## Care and maintenance

---

Your device is a product of superior design and craftsmanship and should be treated with care. The following suggestions will help you protect your warranty coverage.

- Keep the device dry. Precipitation, humidity, and all types of liquids or moisture can contain minerals that will corrode electronic circuits. If your device does get wet, allow it to dry completely.
- Do not use or store the device in dusty, dirty areas. Its moving parts and electronic components can be damaged.
- Do not store the device in hot areas. High temperatures can shorten the life of electronic devices, damage batteries, and warp or melt certain plastics.
- Do not store the device in cold areas. When the device returns to

its normal temperature, moisture can form inside the device and damage electronic circuit boards.

- Do not attempt to open the device.
- Do not drop, knock, or shake the device. Rough handling can break internal circuit boards and fine mechanics.
- Do not use harsh chemicals, cleaning solvents, or strong detergents to clean the device.
- Do not paint the device. Paint can clog the moving parts and prevent proper operation.

These suggestions apply equally to your device, charger, or any accessory. If any device is not working properly, take it to the nearest authorised service facility for service.