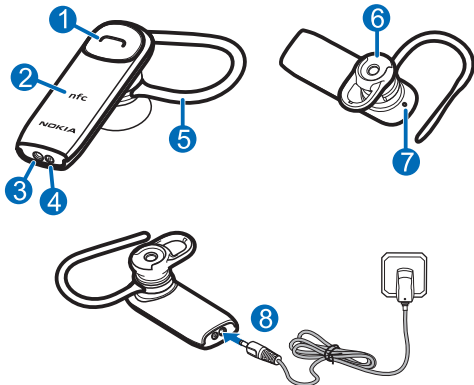
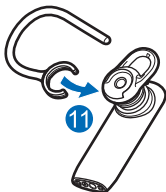
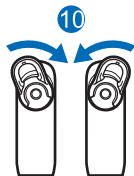


# Nokia Bluetooth Headset BH-219

---



Issue 2.0



14



## DECLARATION OF CONFORMITY

Hereby, NOKIA CORPORATION declares that this BH-219 product is in compliance with the essential requirements and other relevant provisions of Directive 1999/5/EC. A copy of the Declaration of Conformity can be found at [http://www.nokia.com/phones/declaration\\_of\\_conformity/](http://www.nokia.com/phones/declaration_of_conformity/).

The image shows the CE mark, which consists of the letters 'C' and 'E' in a stylized, bold font, followed by the number '2150' in a similar bold font.

© 2010 Nokia. All rights reserved.

Nokia, Nokia Connecting People and the Nokia Original Accessories logo are trademarks or registered trademarks of Nokia Corporation. Nokia tune is a sound mark of Nokia Corporation. Other product and company names mentioned herein may be trademarks or tradenames of their respective owners.

Reproduction, transfer, distribution, or storage of part or all of the contents in this document in any form without the prior written permission of Nokia is prohibited. Nokia operates a policy of continuous development. Nokia reserves the right to make changes and improvements to any of

the products described in this document without prior notice.

Bluetooth is a registered trademark of Bluetooth SIG, Inc.

To the maximum extent permitted by applicable law, under no circumstances shall Nokia or any of its licensors be responsible for any loss of data or income or any special, incidental, consequential or indirect damages howsoever caused.

The contents of this document are provided "as is". Except as required by applicable law, no warranties of any kind, either express or implied, including, but not limited to, the implied warranties of merchantability and fitness for a particular purpose, are made in relation to the accuracy, reliability or contents of this document. Nokia reserves the right to revise this document or withdraw it at any time without prior notice.

The availability of products may vary by region. For more information, contact your Nokia dealer. This device may contain commodities, technology or software subject to export laws and regulations from the US and other countries. Diversion contrary to law is prohibited.

## Introduction

---

With the Nokia Bluetooth Headset BH-219, you can make and answer calls hands-free with your compatible mobile device.

Read this user guide carefully before using the headset. Also, read the user guide for the device that you connect to the headset.

The surface of this device is nickel-free.

This product may contain small parts. Keep them out of the reach of small children.

### **Bluetooth wireless technology**

Bluetooth wireless technology allows you to connect compatible devices without cables. The headset and the other device do not need to be in line of sight, but they should be within 10 metres (33 feet) of each other.

Connections may be subject to interference from obstructions, such as walls, or other electronic devices.

The headset is compliant with the Bluetooth Specification 2.1 + EDR supporting the Headset Profile 1.1 and Hands-Free Profile 1.5. Check with the manufacturers of other devices to determine their compatibility with this device.

## Get started

The headset contains the following parts shown on the title page: multifunction key (1), Near Field Communication (NFC) area (2), charger connector (3), microphone (4), earloop (5), earpiece (6), and indicator light (7).

Before using the headset, you must charge the battery and pair the headset with a compatible device.

Parts of the device are magnetic. Metallic materials may be attracted to the device. Do not place credit cards or other magnetic storage media near the device, because information stored on them may be erased.

### Charge the battery

Before charging the battery, carefully read "Battery and charger information".

1. Connect the charger to a wall outlet.
2. Connect the charger cable to the charger connector (8). The red indicator light is displayed during charging.

Charging the battery fully may take up to 2 hours.

3. When the battery is fully charged, the green indicator light is displayed. Disconnect the charger from the headset, then from the wall outlet.

When you unplug a charger, hold and pull the plug, not the cord.

The fully charged battery has power for up to 6 hours of talk time or up to 100 hours of standby time.

To check the battery charge when the headset is not connected to a charger,

press the multifunction key when the headset is connected to a mobile device. If the indicator light is green, the charge level is sufficient. If the light is yellow, you may need to recharge the battery soon. If the light is red, recharge the battery.

When the battery charge is low, the headset beeps every 5 minutes and the red indicator light flashes.

### **Switch the headset on**

To switch on, press the multifunction key. If your device supports the Near Field Communication (NFC) feature, make sure the feature is activated in the device, and touch the NFC area of the device with the NFC area of the headset. For details on NFC, see the user guide of your device.

The headset beeps, and the green indicator light flashes slowly while the headset tries to connect to one or two last connected devices.

When the headset is connected to at least one device and is ready for use, the blue indicator light flashes slowly. If the headset has not been paired with a device, it automatically enters pairing mode.

### **Switch the headset off**

To switch off, press and hold the multifunction key for about 5 seconds.

The headset beeps, and the red indicator light is briefly displayed.

If the headset is not connected to a device within about 30 minutes, it switches off automatically.

### **Pair and connect the headset**

Before using the headset, you must pair and connect it to a compatible device.

You can pair the headset with up to eight devices, but you can connect it

to a maximum of two devices at a time.

To pair and connect the headset to your device if the device supports NFC, make sure the headset is off and NFC is activated in the device, and touch the NFC area of the device with the NFC area of the headset.

To pair and connect the headset to your device if the device does not support NFC:

1. Make sure your mobile device is switched on and the headset is off.
2. If the headset has not been previously paired with a device, switch on the headset. The headset enters pairing mode, and the blue indicator light starts to flash quickly.

If the headset has been previously paired with a device, make sure the headset is switched off, and press and hold the multifunction key for

about 5 seconds until the blue indicator light starts to flash quickly.

3. Within about 3 minutes, activate Bluetooth on your device, and set it to search for Bluetooth devices. For details, see the user guide of your mobile device.
4. Select the headset from the list of found devices.
5. If necessary, enter the passcode 0000 to pair and connect the headset to your device.

In some devices, you may need to make the connection separately after pairing.

When the headset is connected to at least one device and is ready for use, the blue indicator light flashes slowly.

To manually connect the last used device, press and hold the multifunction key for about 2 seconds (when no other device is connected),



or make the connection in the Bluetooth menu of the device.

To manually connect or disconnect your device if it supports NFC, touch the NFC area of the device with the NFC area of the headset.

You may be able to set your device so that the headset connects to it automatically. To activate this feature in a Nokia device, modify the paired device settings in the Bluetooth menu.

## Basic use

---

### Change the earpad

The headset may be provided with different sized earpads. Select the earpad that fits the best and is the most comfortable for your ear.

To change the earpad, pull the current earpad from the earpiece, and push the new earpad into place (9).

### Place the headset on the ear

To use the headset with the earloop, attach the earloop to it (11). To detach the earloop, gently pull it from the headset.

You can rotate the earpad to keep the headset securely in the ear (10). For example, if you use the headset on the right ear, you may need to rotate the earpad to the right for the best fit. If you wear an earring, make sure it is not accidentally attached to the earpad.

To place the headset on the ear, slide the earloop behind your ear (12), and gently push the earpiece against your ear. Point the headset towards your mouth (13).

### Adjust volume

The headset automatically adjusts the volume according to ambient noise. To manually adjust the volume, use the volume controls of the connected device.

The selected volume level is saved for the device that is currently connected to the headset.

### Calls

To make a call, use your mobile device in the normal way when the headset is connected to it.

To redial the number you last called (if your mobile device supports this feature with the headset), when no call is in progress, press the multifunction key twice.

To activate voice dialling (if your mobile device supports this feature with the headset), when no call is in progress, press and hold the

multifunction key for about 2 seconds. Proceed as described in the user guide of the mobile device.

To answer or end a call, press the multifunction key (14). To reject a call, press the multifunction key twice.

To switch a call between the headset and a compatible connected device, press and hold the multifunction key for about 2 seconds.

### Connect to two devices

The headset can be connected to two devices at the same time.

#### Pair and connect to two devices

To pair the headset with two devices, switch on the headset, activate pairing mode, and pair it with the first device. Switch off the headset, activate pairing mode, and pair it with the second device.

To connect the headset to the two devices, switch the headset off and back on.

### Handle calls

If the headset can connect to two devices at the same time and you use redialling or voice dialling, the call is made on the device that you last used to make a call when the headset was connected to it.

To answer a call on one connected device and end the active call on the other device, press the multifunction key.

To answer a call on one connected device and put the active call on hold on the other device, press and hold the multifunction key for about 2 seconds.

To end the active call on one connected device and make the call on hold active on the other device, press the multifunction key.

To switch between the active call on one device and the call on hold on the other device, press and hold the multifunction key for about 2 seconds.

### **Clear pairings**

To clear the pairings from the headset, switch off the headset, and press and hold the multifunction key for about 8 seconds. The headset beeps twice, the red and green indicator lights alternate, and the headset enters pairing mode.

### **Troubleshooting**

If you cannot connect the headset to your compatible device, check that the headset is charged, switched on, and paired with the device.

## Battery and charger information

This device has an internal, nonremovable, rechargeable battery. Do not attempt to remove the battery from the device as you may damage the device. This device is intended for use when supplied with power from the following chargers: AC-3, AC-4, AC-5, AC-8, DC-4 and DC-9. The exact charger model number may vary depending on the type of plug. The plug variant is identified by one of the following: E, X, AR, U, A, C, K, or B. The battery can be charged and discharged hundreds of times, but it will eventually wear out.

Talk and standby times are estimates only. Actual times are affected by, for example, device settings, features being used, battery condition, and temperature.

If the battery has not been used for a long time, to begin charging, you may need to connect the charger, then disconnect and reconnect it.

If the battery is completely discharged, it may take several minutes before the charging indicator is displayed.

When your charger is not in use, unplug it from the electrical plug and the device. Do not leave a fully charged battery connected to a charger, as overcharging may shorten the battery's lifetime. If left unused, a fully charged battery will lose its charge over time.

Always keep the battery between 15°C and 25°C (59°F and 77°F). Extreme temperatures reduce the capacity and lifetime of the battery. A device with a hot or cold battery may not work temporarily.

Do not dispose of batteries in a fire as they may explode. Dispose of batteries according to local regulations. Recycle when possible. Do not dispose as household waste.

Use the charger for its intended purpose only. Improper use or use of unapproved chargers may present a risk of fire, explosion, or other hazard, and may invalidate any approval or warranty. If

you believe the charger is damaged, take it to a service centre for inspection before continuing to use it. Never use a damaged charger. Only use the charger indoors.

## Take care of your device

---

Handle your device, charger and accessories with care. The following suggestions help you protect your warranty coverage.

- Keep the device dry. Precipitation, humidity, and all types of liquids or moisture can contain minerals that corrode electronic circuits. If your device gets wet, allow it to dry completely.
- Do not use or store the device in dusty or dirty areas. Moving parts and electronic components can be damaged.
- Do not store the device in high temperatures. High temperatures can

shorten the life of the device, damage the battery, and warp or melt plastics.

- Do not store the device in cold temperatures. When the device warms to its normal temperature, moisture can form inside the device and damage electronic circuits.
- Do not attempt to open the device.
- Do not drop, knock, or shake the device. Rough handling can break internal circuit boards and mechanics.
- Only use a soft, clean, dry cloth to clean the surface of the device.

- Do not paint the device. Paint can clog the moving parts and prevent proper operation.

## Recycle

Always return your used electronic products, batteries, and packaging materials to dedicated collection points. This way you help prevent uncontrolled waste disposal and promote the recycling of materials. Check product environmental information and how to recycle your Nokia products at [www.nokia.com/werecycle](http://www.nokia.com/werecycle), or with a mobile device, [www.nokia.mobi/werecycle](http://www.nokia.mobi/werecycle).



The crossed-out wheeled-bin symbol on your product, battery, literature, or packaging reminds you that all electrical and electronic products, batteries, and accumulators must be taken to separate collection at the end of their working life. This requirement applies in the European Union. Do not dispose of these products as unsorted municipal

waste. For more information on the environmental attributes of your device, see [www.nokia.com/ecodeclaration](http://www.nokia.com/ecodeclaration).