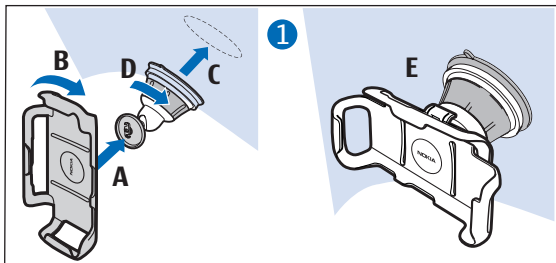
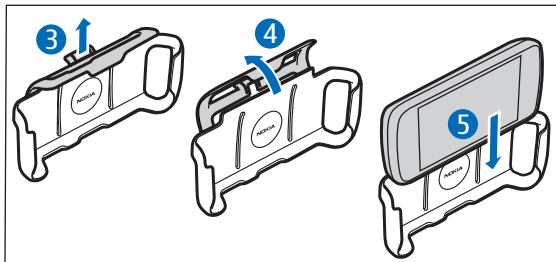
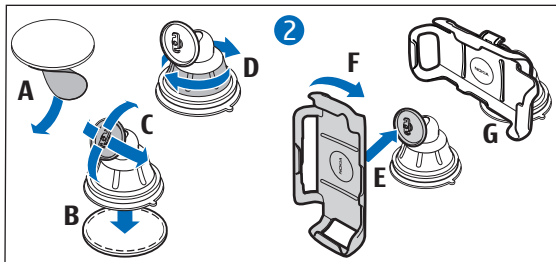
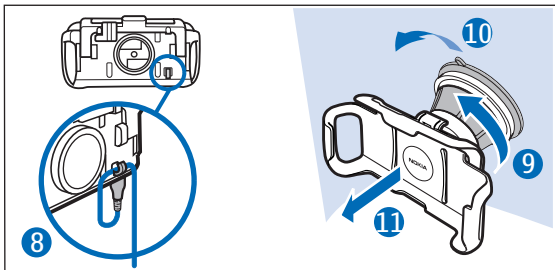
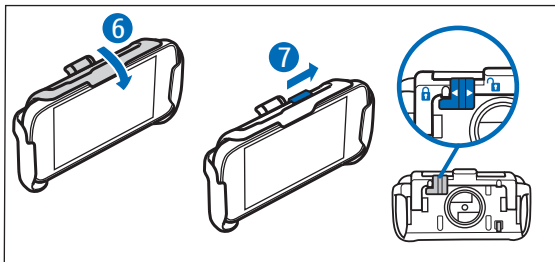


# Nokia Holder Easy Mount HH-20 and CR-116/117

---







© 2009–2010 Nokia. All rights reserved.  
Nokia, Nokia Connecting People and the  
Nokia Original Accessories logo are

trademarks or registered trademarks of  
Nokia Corporation.

## Introduction

---

The Nokia Holder Easy Mount HH-20 is a mounting device that allows you to attach your compatible mobile holder to the windscreen or, using the optional adhesive pad, to the dashboard of your car.

Read this guide carefully before installing and using the product.

This product may contain small parts. Keep them out of the reach of small children.

## General safety instructions

---

Obey all local laws. Always keep your hands free to operate the car while driving. Your first consideration while driving should be road safety. Only operate the mounting device or mobile holder if it is safe to do so under all driving conditions.

When you install the mounting device or mobile holder, ensure that they do

not interfere with or hinder the steering or braking systems or other systems used in the operation of the car (for example, airbags) or disturb your field of vision while driving.

Check that the deployment of the airbag is not blocked or impaired in any way.

Ensure that the mounting device or mobile holder is not installed where you might come in contact with it in the event of an accident or collision.

Periodically check that the suction cup at the bottom of the mounting device is firmly attached to the windscreen or dashboard, especially if the ambient temperature changes a lot.

Never leave the mounting device inside the car in direct sunlight or in excessive heat. The mounting device and suction cup may be damaged and adhesion may be impaired if the inside temperature exceeds +70°C (160°F).

When attaching a mobile holder, ensure that the display of the mobile device is clearly visible for the user. For your safety, install the holder in the upright position.

## Attach to a windscreen

---

### **Attach the holder to the mounting device**

To attach the mobile holder to the mounting device, insert the catch on the mounting device into the slot at the back of the holder (see step 1A at the start of this guide). Rotate the holder clockwise about 90 degrees until it locks into place (1B).

To detach the holder from the mounting device, rotate it anticlockwise.

### **Attach the mounting device to the windscreen**

Before you attach the mounting device to the windscreen, locate a safe mounting surface on the windscreen,

and clean the surface thoroughly with a glass cleaner and a clean towel. If the ambient temperature is below +15°C (60°F), carefully warm the surface and the suction cup with a hair dryer to ensure a firm grip on the windscreen. Ensure that you do not heat the windscreen excessively to avoid damage to it.

Press the suction cup of the mounting device against the windscreen (see step 1C), and rotate the ring on the

mounting device clockwise (1D) to create a vacuum between the suction cup and the windscreen. Check that the mounting device is firmly attached (1E).

To detach the suction cup from the windscreen, rotate the ring on the mounting device anticlockwise (9), pull the strap located on the edge of the suction cup (10), and pull the holder with the mounting device from the windscreen (11).

## Attach to a dashboard

---

### **Attach the mounting device to the dashboard**

If the product was supplied with an adhesive pad, you can attach the mounting device to the dashboard.

Ensure that the surface where you attach the adhesive pad on the

dashboard is flat, dry, and free from dirt and dust.

Peel off the protective sheet from the adhesive side of the pad (see step 2A), and press the pad against the dashboard so that it stays firmly in place. When you peel off the

protective sheet from the pad, do not touch the adhesive side.

Press the suction cup of the mounting device against the pad (2B). Turn the catch on the mounting device to the desired position (2C). Rotate the ring on the mounting device clockwise (2D) to create a vacuum between the suction cup and the pad.

To detach the suction cup from the pad, proceed in the same way as when you detach the cup from a windscreen (9, 10, and 11).

### **Attach the holder to the mounting device**

To attach the mobile holder to the mounting device, insert the catch on the mounting device into the slot at the back of the holder (see step 2E). Rotate the holder clockwise about 90 degrees until it locks into place (2F). Check that the mounting device is firmly attached (2G).

To detach the holder from the mounting device, rotate it anticlockwise.

## **Place or remove the mobile device**

---

Do not place or remove a mobile device while driving.

To place your device into the holder, lift the latch (see step 3), and turn it to the back (4). Slide the mobile device into the holder (5). Turn the latch over the device (6), and slide the switch at

the top of the holder to the right to lock the device firmly in place (7). To charge the battery of your device, use a compatible charger. To attach the charger cable to the back of the holder, insert the cable into the cable support (8), and connect the charger

plug to the charger connector on your device.

To remove the device, slide the switch to the left, lift the latch, and pull the

device out from the holder. Turn the latch to its initial position, and slide the switch to the right to lock the latch in place.

## Taking care of your device

---

Your device is a product of superior design and craftsmanship and should be treated with care. The following suggestions will help you protect your warranty coverage.

- Do not use or store the device in dusty, dirty areas. Its moving parts can be damaged.
- Do not drop, knock, or shake the device. Rough handling can break fine mechanics.
- Do not use harsh chemicals, cleaning solvents, or strong detergents to clean the device. Only use a soft, clean, dry cloth to clean the surface of the device.

- Do not paint the device. Paint can clog the moving parts and prevent proper operation.