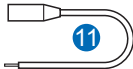
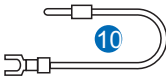
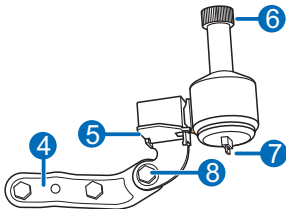
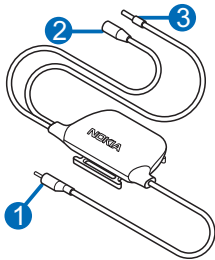
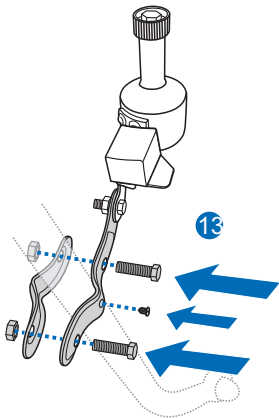
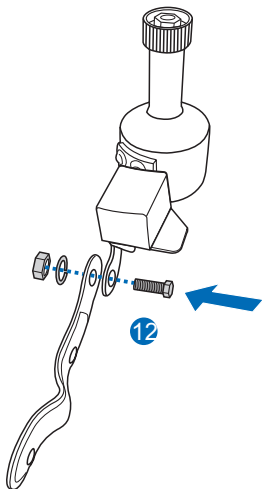


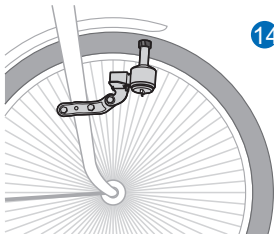
# Nokia Bicycle Charger Kit

---

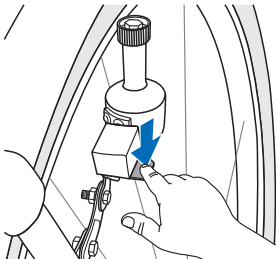


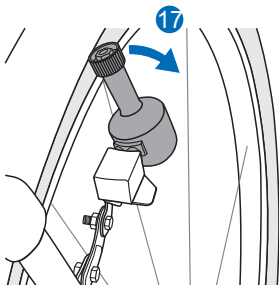
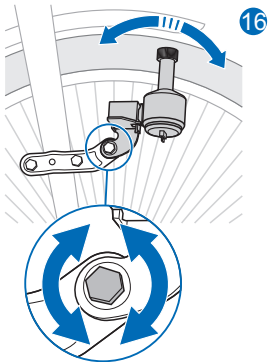
Issue 3.0

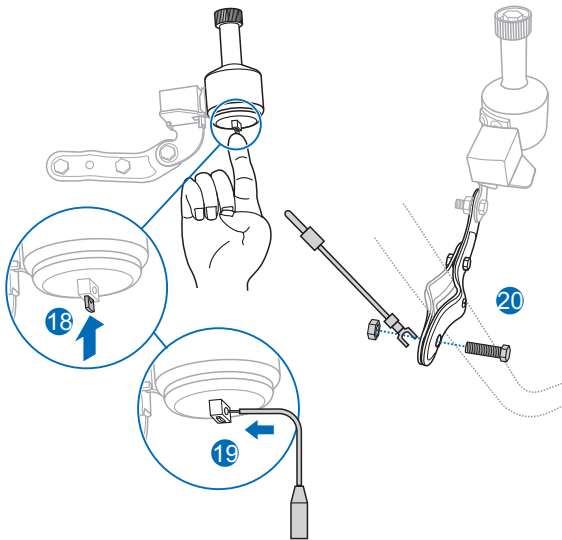


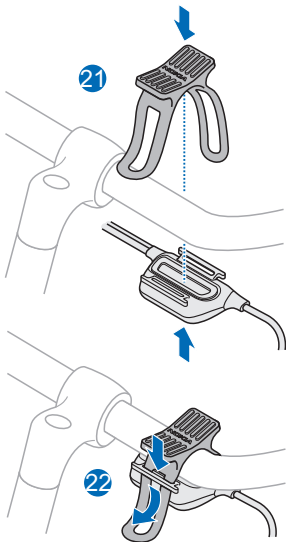


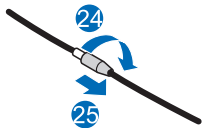
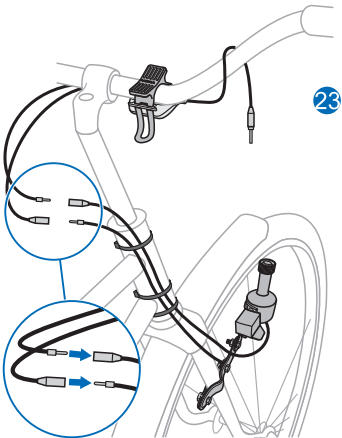
15

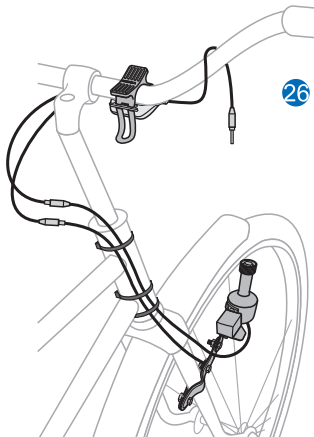




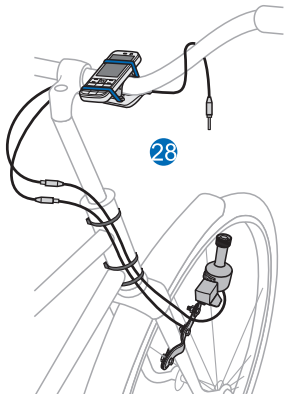
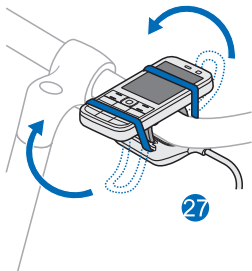


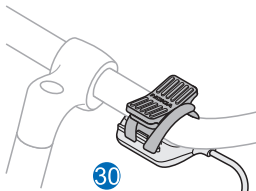
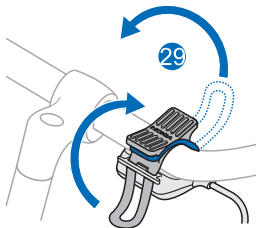














© 2010 Nokia. All rights reserved.

Nokia, Nokia Connecting People and the Nokia Original Accessories logo are trademarks or registered trademarks of Nokia Corporation.

## Introduction

With the Nokia Bicycle Charger Kit, you can charge the battery in your compatible Nokia device using the bottle dynamo mounted on the bicycle.

Install the kit, connect the charger to the 2.0 mm charger connector on your mobile device, and start pedalling, with the dynamo against the bicycle wheel.

The kit is designed to be used with normal (utility) bicycles.

The product can be used on rough terrain when the charger and mobile device are properly attached to the bicycle.

Read this guide carefully before installing and using the product. Also, read the user guide for your bicycle and the Nokia device that you connect to the kit.

This product may contain small parts. Keep them out of the reach of small children.



**Warning:** The connectors of this device may contain a small amount of nickel.

Persons who are sensitised to nickel may have symptoms from prolonged skin contact with the connectors.

## Compatible mobile devices

---

Use the kit only with compatible Nokia mobile devices that have a 2 mm charger connector.

For the latest information, go to [www.nokia.com/support](http://www.nokia.com/support).

## Parts

---

The product contains the following parts shown on the title page:

- Nokia Bicycle Charger DC-14: charger cable (1), grounding wire (2), electric wire (3)
- Bottle Dynamo for Bicycle: mounting bracket (4), lever (5), friction roller (6), latch for electric wire (7), adjustment bolt for dynamo position (8)
- Other parts: Nokia Bicycle Holder CR-124 (9), loose grounding wire (10), loose electric wire (11)

## General safety instructions

---

Obey all local laws. Always keep your hands free to operate the bicycle while cycling. Your first consideration while cycling should be road safety.

Only operate the product if it is safe to do so under all cycling conditions.

When you install the product, make sure it does not interfere with or

hinder the steering or braking systems of the bicycle.

Make sure the product is not installed where you might come in contact with it in the event of an accident or collision.

During extended operation or in high temperatures, the charger or dynamo may be very warm. Do not touch the dynamo for a few minutes after a long ride.

Incorrect installation may cause the dynamo to fall between the bicycle

spokes and jam the wheel. After riding a few kilometres, make sure that the dynamo is still securely fitted. After that, check every time before using the bicycle.

Incorrect installation of the dynamo causes an increase in running resistance and an excessive wearing of tyres during operation.

While riding your bicycle, do not attempt to connect the charger to your mobile device and do not make or answer calls.

## Mount the dynamo

---

Only use the supplied dynamo with the charger.

### **Attach the dynamo to the mounting bracket**

To attach the dynamo to the mounting bracket, use the supplied bolt, nut,

and washer (12). Make sure the bracket is firmly attached to the dynamo.

### **Attach the bracket to the front fork**

To attach the mounting bracket to the right side of the front fork (with a diameter of 10 to 32 mm) on your bicycle, use the supplied bolts, nuts, and screw (13). Make sure the bracket is firmly attached to the fork.

### **Mount the dynamo against the tyre**

To mount the dynamo against the tyre, place the friction roller at the correct angle, height, and distance to the tyre (14) so that it properly touches the side of the tyre when you press the lever (15). Position the dynamo correctly using the adjustment bolt (16).

To detach the roller from the tyre, pull the dynamo away from the tyre (17).

### **Attach the loose electric wire**

To attach the loose electric wire to the dynamo, firmly press and hold the latch at the bottom of the dynamo upwards (18), guide the bare end of the wire through the hole (19), and release the latch to lock the wire in place.

### **Attach the loose grounding wire**

To attach the loose grounding wire to the mounting bracket, place the connector of the wire under the nut (20), and tighten the bolt to lock the wire firmly in place.

## Mount the charger and mobile device

---

### **Attach the charger to the handlebar**

To attach the charger and your Nokia mobile device to the handlebar, use the supplied Nokia Bicycle Holder CR-124. The holder is only designed to be used with monoblock mobile devices.

Place the holder on the top and the charger on the bottom of the handlebar (21). Thread the straps of the holder through the slots at the charger (22).

The holder comes with a plastic bag. You can keep your mobile device in the bag while it charges.

### **Connect the wires**

To connect the charger wires to the electric wire attached to the dynamo and the grounding wire attached to

the mounting bracket, press the ends of the corresponding wires into each other (23).

Attach the wires to the head tube with the supplied removable cable ties. Make sure the charger is properly mounted (26).

To disconnect a charger wire from the electric or grounding wire, hold the wire connectors, rotate either connector (24), and pull the connectors from each other (25).

### **Attach the mobile device to the handlebar**

Place the mobile device over the holder. Carefully stretch the holder straps, and thread them around the top and bottom sides of the mobile device (27). Make sure the mobile

device stays firmly in place and is properly mounted (28).

To keep the holder attached to the handlebar when you are not using it, carefully stretch the holder straps over the handlebar, and thread the straps behind the tabs on the charger (29). Make sure the holder stays firmly in place (30).

### **Connect the charger to the mobile device**

Connect the charger cable to the 2.0 mm charger connector on your Nokia device.

If you connect the dynamo to a headlamp at the same time, your device will not charge properly.

## **Charge the battery using the dynamo**

---

Make sure the charger is connected to your mobile device.

Press the lever of the dynamo so that the friction roller touches the tyre.

Begin pedalling your bicycle faster than 6 km/h (4 mph), which is a typical walking speed. If you pedal too slowly, charging may not start even when you increase your speed. In that case, stop the bicycle, and detach the charger cable from the mobile device for a few seconds.

While riding your bicycle, the dynamo output may not be sufficient to charge your mobile device if you are using a Bluetooth headset with it.

If your device does not seem to be charging your Nokia device, disconnect the charger cable from the charger connector on your device, and reconnect it after a few seconds.



## Take care of your device

Handle your device and accessories with care. The following suggestions help you protect your warranty coverage.

- Keep the device dry. Precipitation, humidity, and all types of liquids or moisture can contain minerals that corrode electronic circuits. If your device gets wet, allow it to dry completely.
- Do not use or store the device in dusty or dirty areas. Moving parts and electronic components can be damaged.
- Do not attempt to open the device.
- Do not drop, knock, or shake the device. Rough handling can break mechanics.
- Only use a soft, clean, dry cloth to clean the surface of the device.
- Do not paint the device. Paint can clog the moving parts and prevent proper operation.

### Recycle

Always return your used electronic products, batteries, and packaging materials to dedicated collection points. This way you help prevent uncontrolled waste disposal and promote the recycling of materials. Check product environmental information and how to recycle your Nokia products at [www.nokia.com/werecycle](http://www.nokia.com/werecycle), or with a mobile device, [www.nokia.mobi/werecycle](http://www.nokia.mobi/werecycle).



The crossed-out wheeled-bin symbol on your product, battery, literature, or packaging reminds you that all electrical and electronic products, batteries, and accumulators must be taken to separate collection at the end of their working life. This requirement applies in the European Union. Do not dispose of these products as unsorted municipal waste. For more information on the environmental attributes of your device, see [www.nokia.com/ecodeclaration](http://www.nokia.com/ecodeclaration).